



**cvm design
consulting** Ltd



cvm design brochure september 2023

structural steel &
architectural metalwork

☎ 07438 289492

✉ office@cvmdesign.co.uk

“

CVM Design Consulting Ltd is a multi-disciplinary CAD company based in Hertfordshire, UK.

Our team of highly skilled technicians and engineers are focused on offering the best quality services for our clients to create something brilliant and are committed to delivering high-quality and accurate drawings that meet your specifications and expectations. Our experience in the industry, attention to detail, and dedication to client satisfaction make us confident that we can successfully execute every project.

Each project we work on is a product of an on-going dialogue and close collaboration with our clients.

Our core services include:

- 2D Drafting (MEP Drawings, Fabrication Drawings, Architectural Drawings, etc.)
- 3D Modelling (we use Advance Steel for Steel Structures)
- CAD Conversion (Paper to CAD, DWG to DGN, 2D to 3D)
- Reverse Engineering (new 3D Models and 2D Drawings from existing parts)
- Rendering & Animation (Photo-realistic renders, in-situ drawings, animations, etc.)

Scope of Services for Structural Steel and Architectural metalwork:

3D Modelling: Our team will meticulously create a detailed 3D model of the steel structure, allowing for a comprehensive visualization of the final product. This model will serve as the foundation for the subsequent drawings and will aid in accurate decision-making throughout the project.

General Arrangement Drawings: These drawings will illustrate the overall layout of the steel structure, indicating the placement and dimensions of key elements. The GA drawings will provide a clear overview for the steel fabricator, the design team and the stakeholders, facilitating efficient communication and collaboration.

Fabrication Drawings: Precise fabrication drawings will be developed to guide the steel fabrication process. These drawings will include detailed information on each steel component, including dimensions, materials, and connection details. They will ensure that the fabrication process aligns with the design intent, resulting in a high-quality end product.

”

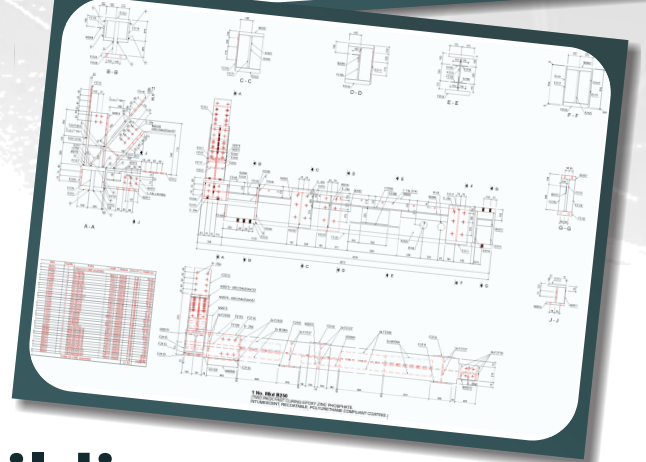
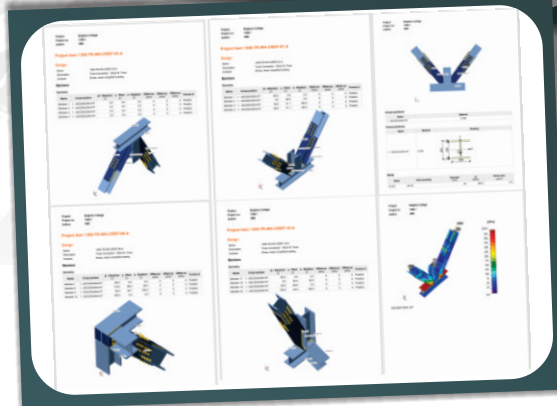
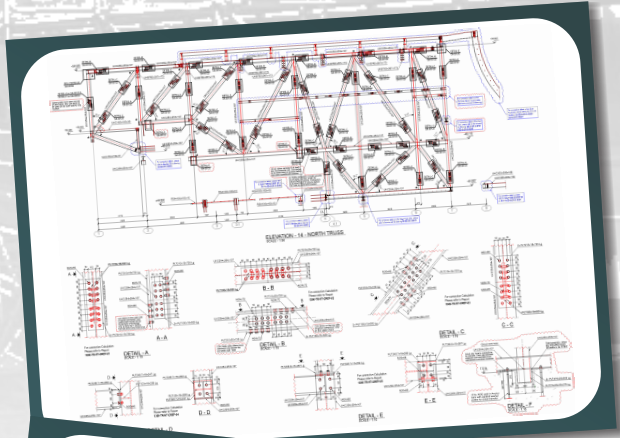
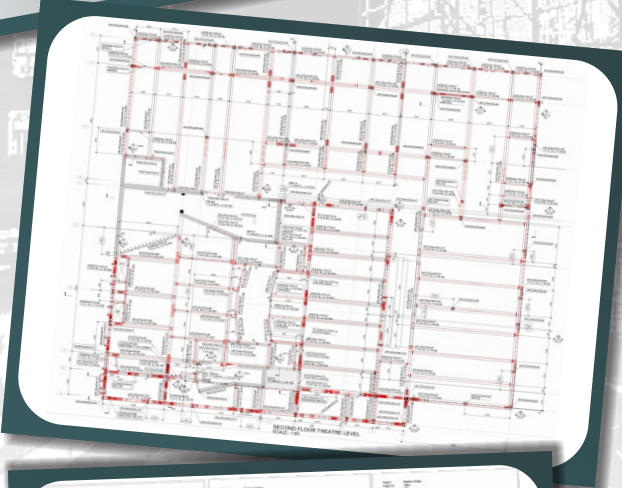
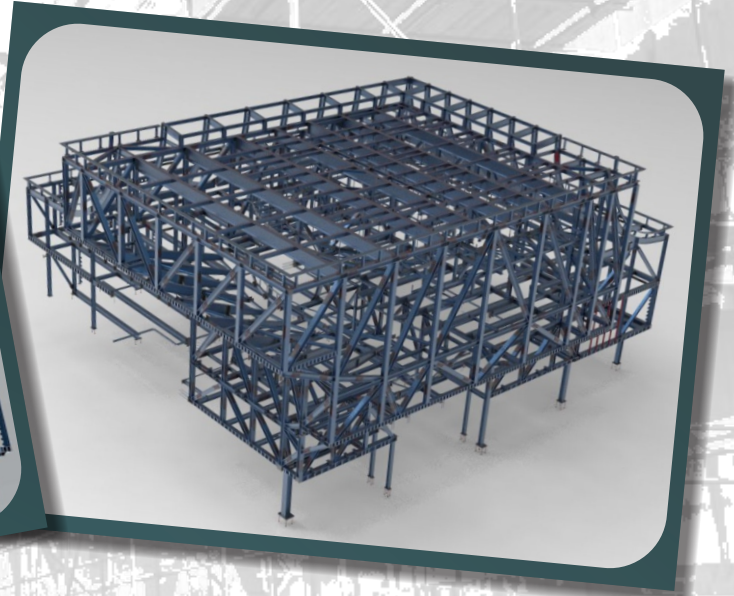
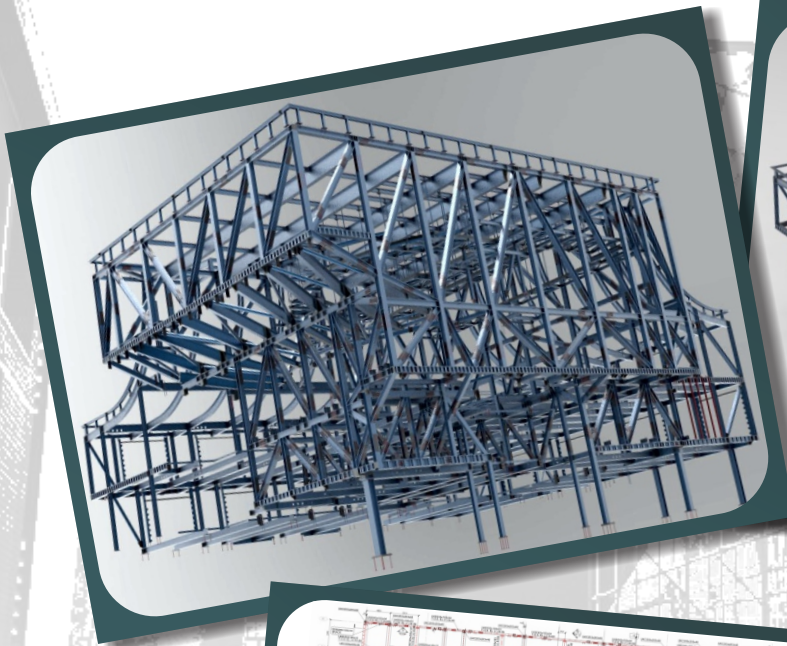


Location: Brighton, UK

Total steel members: 3246 No. Total steel tonnage: 383.83 T

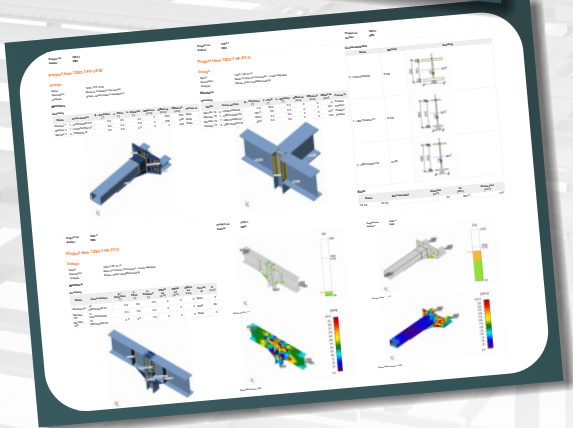
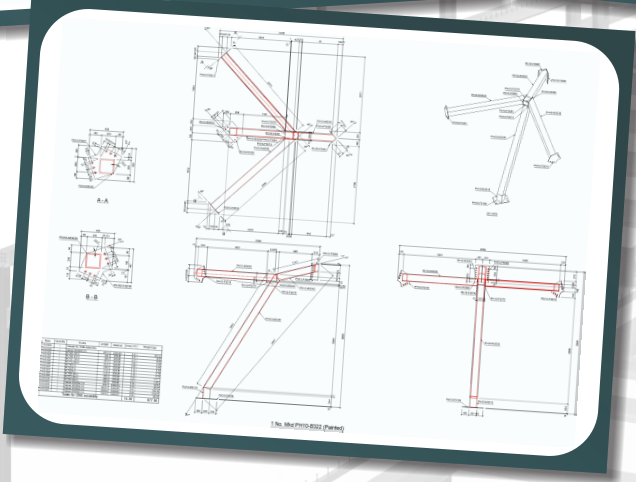
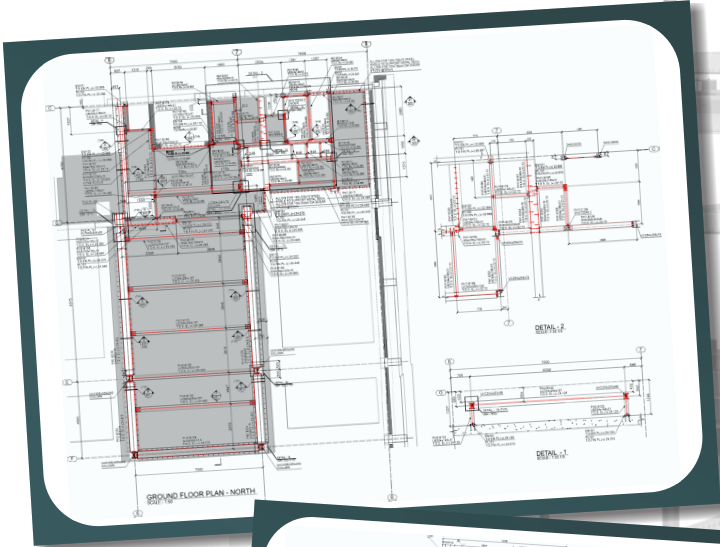
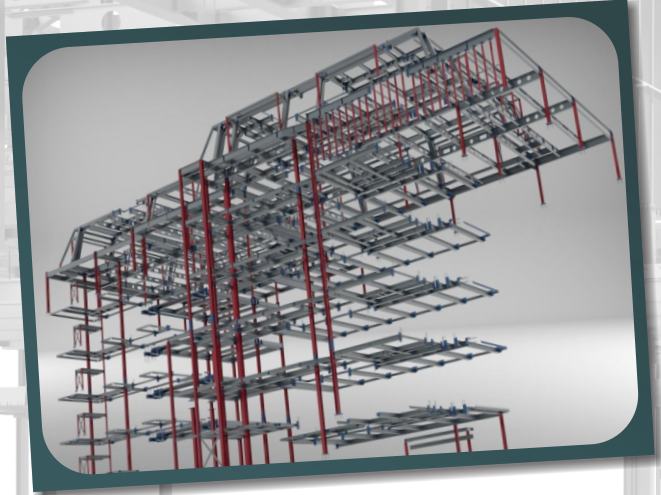
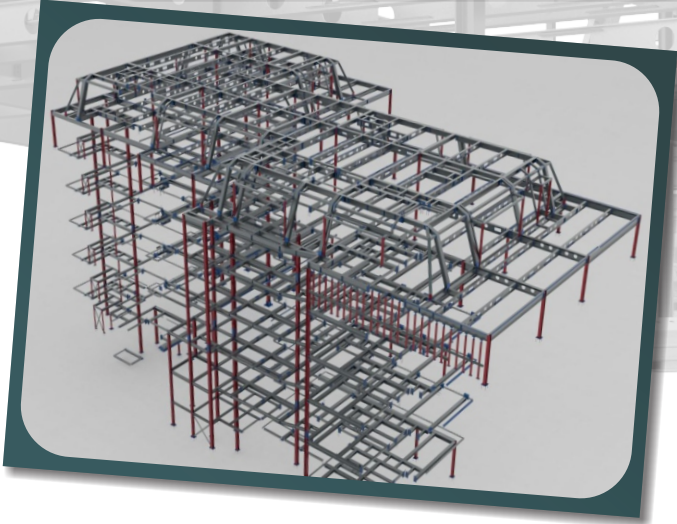
Services provided: 3D Modelling, Steel-to-steel Connection Design and Calculations, General Arrangement drawings & Fabrication Package

Total price for services: £38,100.0



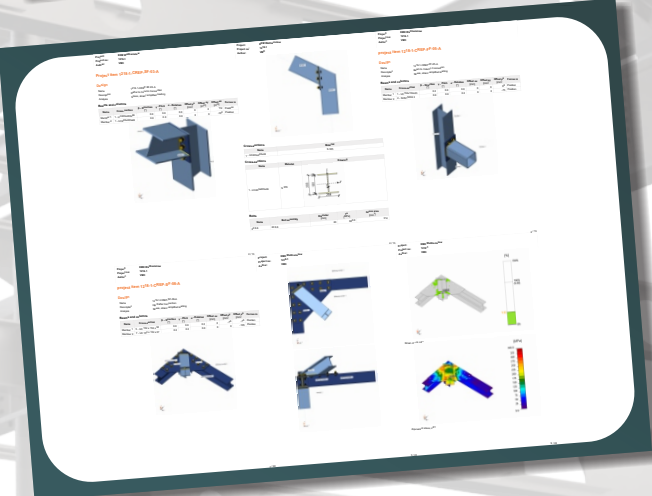
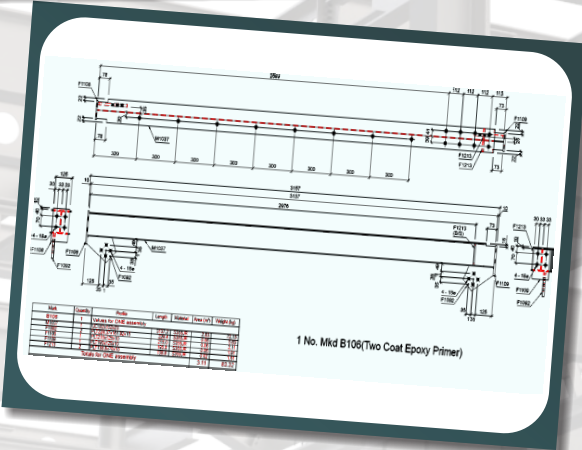
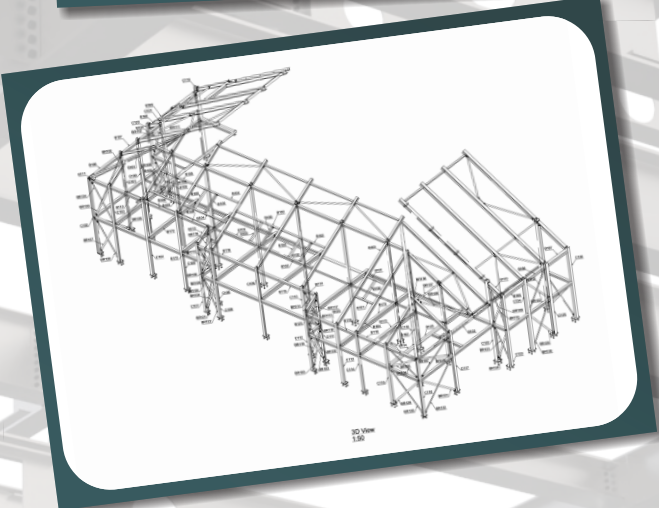
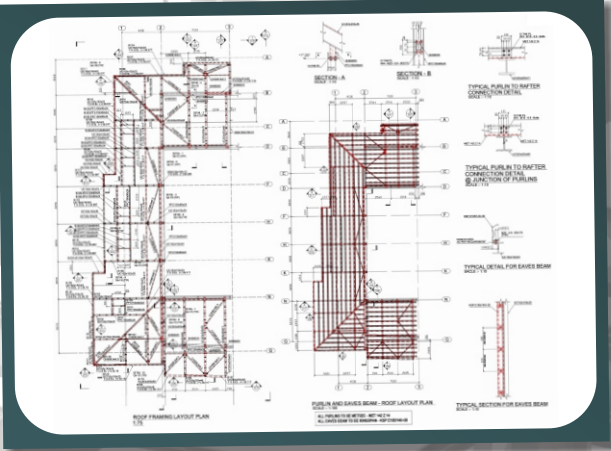
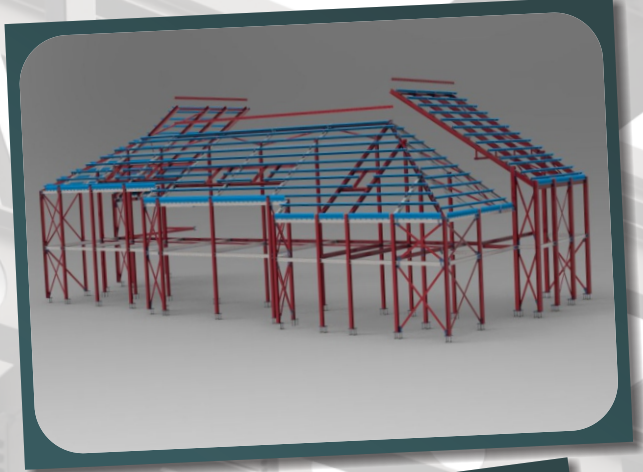
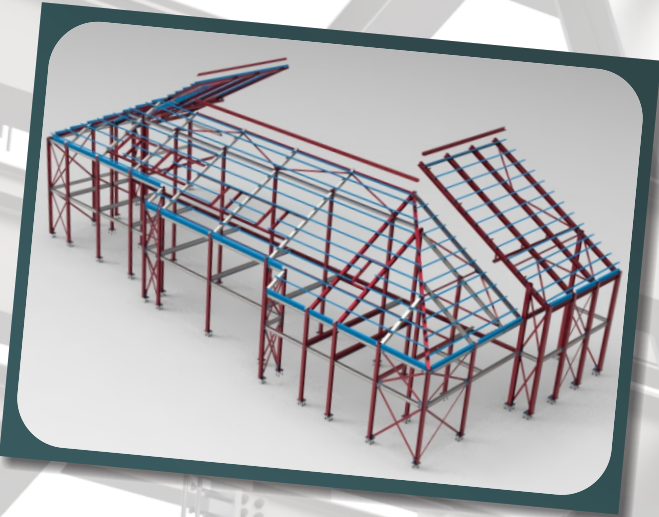
1 Arts & Design Building

Location: **Central London, UK**
Total steel members: **2339 No.** Total steel tonnage: **484.47 T**
Services provided: **3D Modelling, Steel-to-steel Connection Design and Calculations, General Arrangement drawings & Fabrication Package**
Total price for services: **£42,025.0**



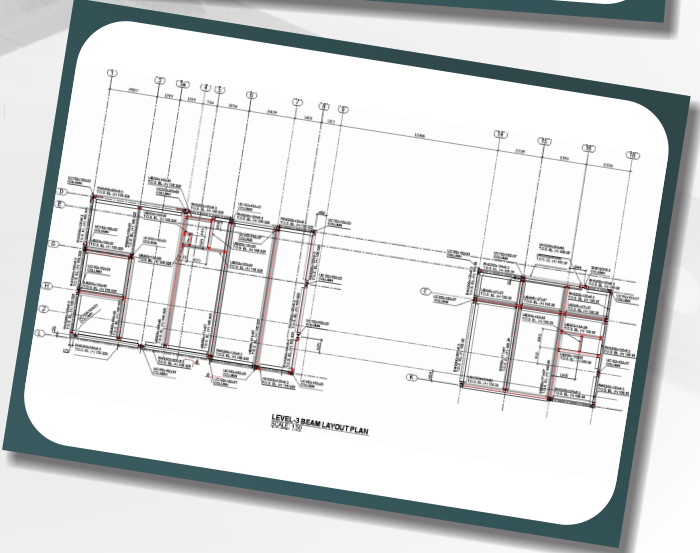
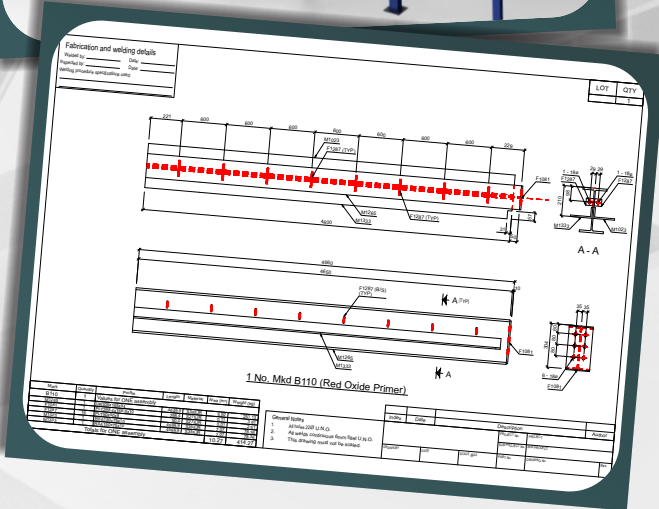
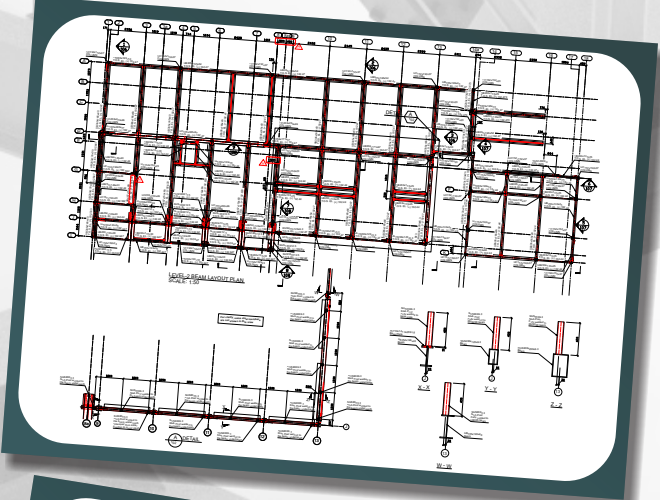
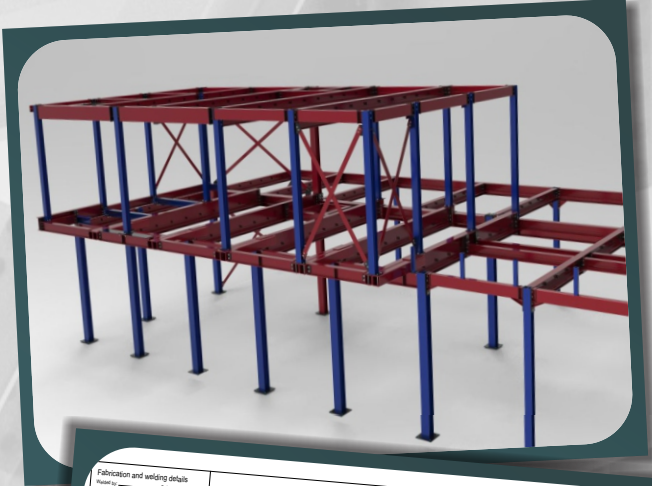
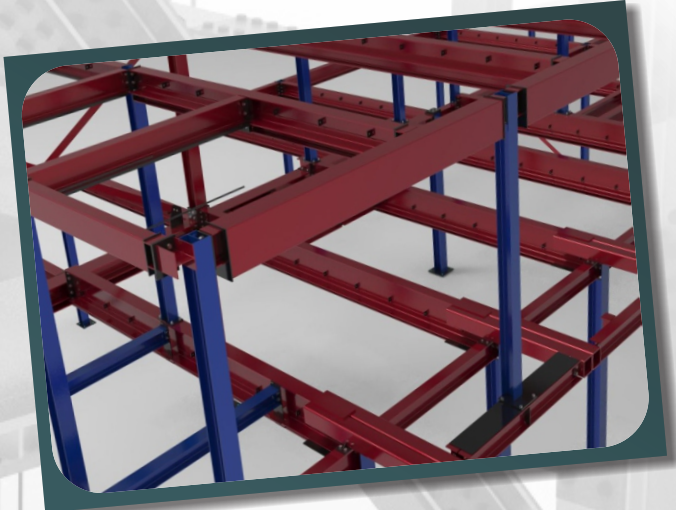
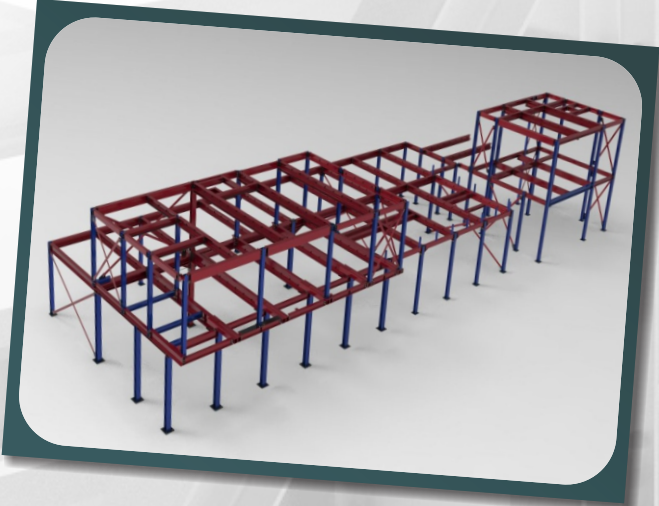
2. Fitzhardinge Steet, W1

Location: **Walthamstow, London, UK**
Total steel members: **645 No.** Total steel tonnage: **31.76 T**
Services provided: **3D Modelling, Steel-to-steel Connection Design and Calculations, General Arrangement drawings & Fabrication Package**
Total price for services: **£19,350.0**



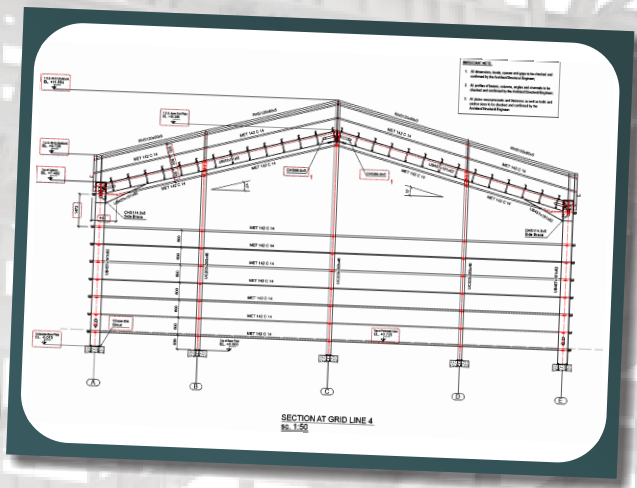
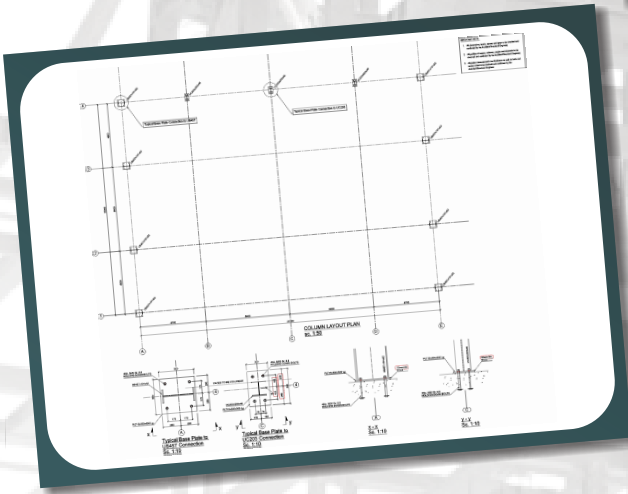
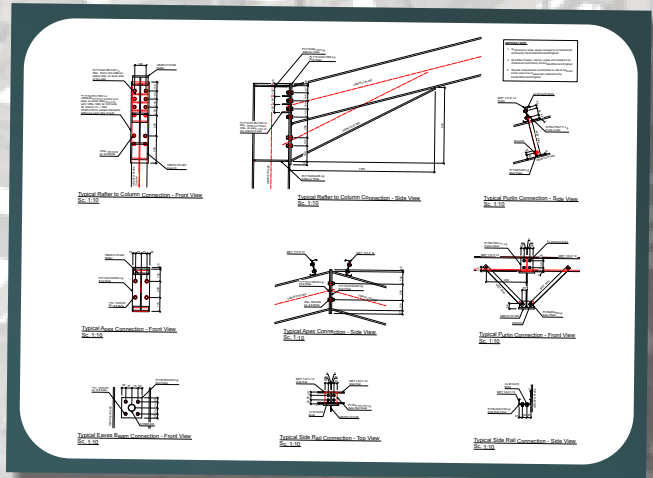
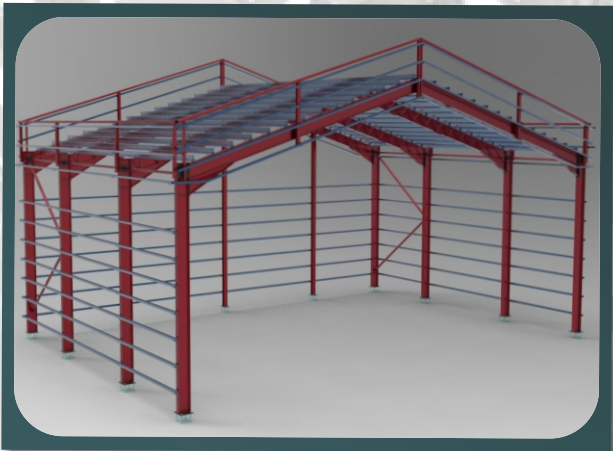
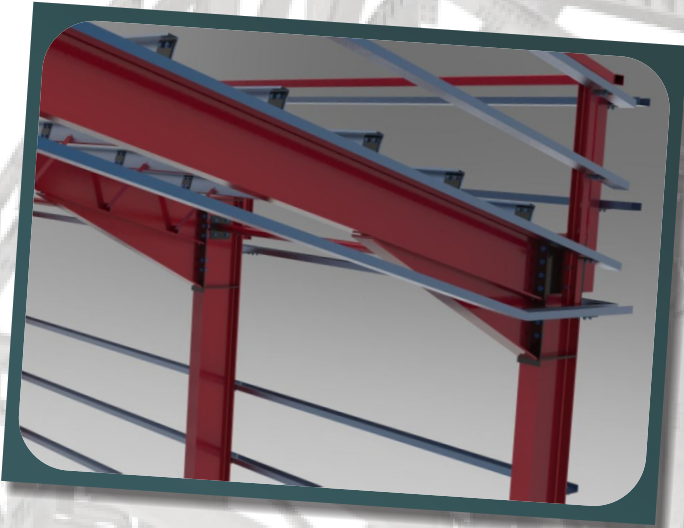
3. Cinema Theatre - Walthamstow

Location: Gloucester, UK
Total steel members: 514 No. Total steel tonnage: 36.12 T
Services provided: 3D Modelling, Steel-to-steel Connection Design and Calculations, General Arrangement drawings & Fabrication Package
Total price for services: £15,420.0



4 Gloucester - Food Dock

Location: Bedford, UK
Total steel members: 84 No. **Total steel tonnage:** 22.45 T
Services provided: 3D Modelling, Steel-to-steel Connection Design and Calculations, General Arrangement drawings & Fabrication Package
Total price for services: £2,850.0



5. ABSS Waste Management